

- researching
- developing
- upgrading

SOL-BOX

Automatic Feeder
For Flat Boxes



sol-box feed allows optimum performances and set free the operator thanks to his buffer capacity of 2.8 meters of stacked flat boxes.

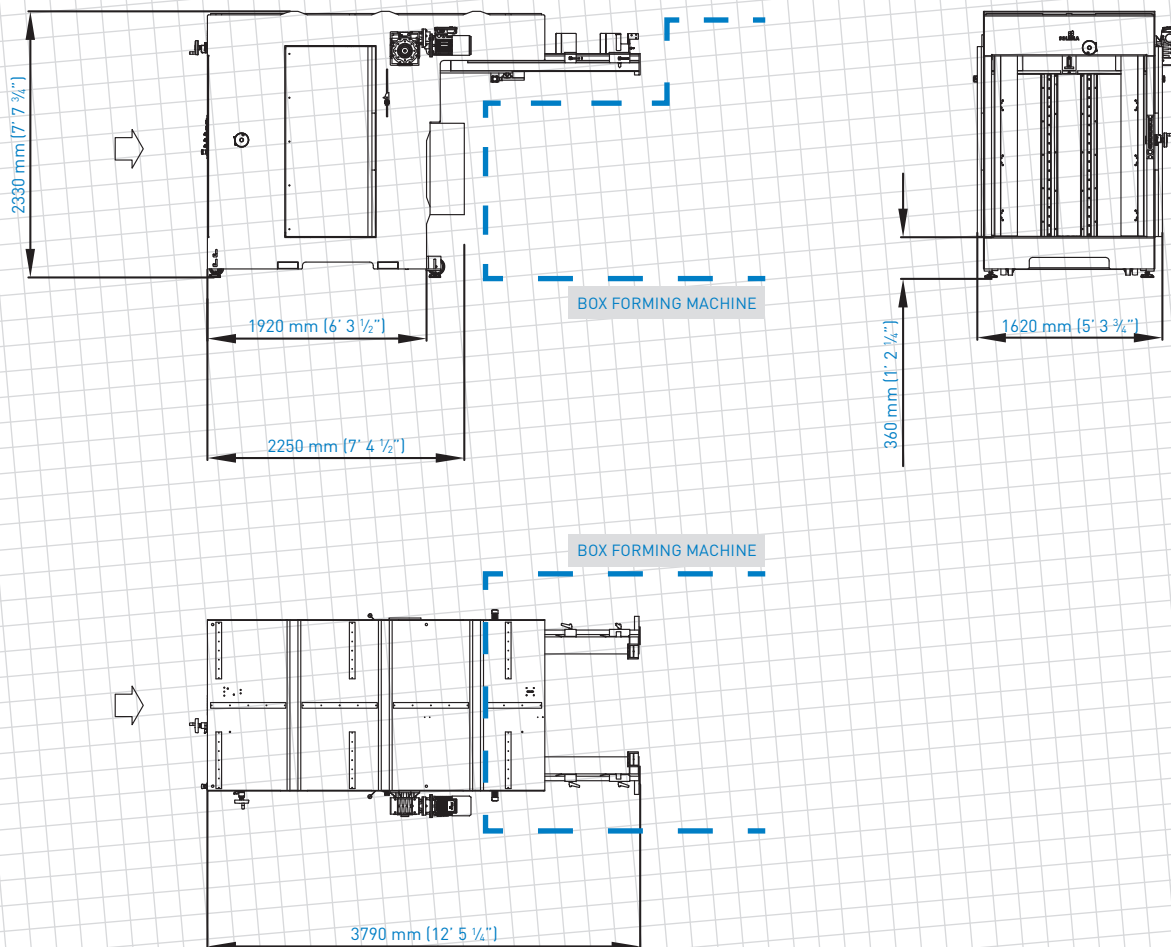
The machine is composed by a pile's waiting position, an elevator, a clamp / pusher system for separating the boxes and a grid system to drop the boxes into the hopper.

The feeding timing process is controlled by a photo-cell placed directly on the hopper of the cardboard box forming machine which is checking the level.

All adjustments of the automatic feeder are quickly carried out by means of a few easy accessible hand wheels with numeric scales.

CE Disegni, specifiche e misure sono soggetti a modifica senza preavviso. Design, specification and measurements are subject to change without notice.

SOL-BOX



■ total weight approx. 2200 kg (4850 lb)

TECHNICAL DETAILS

FLAT BOXES LENGHT

- min. 500 mm (19 3/4") — max. 1200 mm (47 1/4")

FLAT BOXES WIDTH

- min. 400 mm (15 3/4") — max. 900 mm (35 3/4")

PILE HEIGHT

- max. 1500 mm (59")

PILE HEIGHT PRE-LOAD

- min. 50 mm (2") — max. 300 mm (11 3/4")

ELECTRICAL REQUIREMENTS

- electrical power supply: 3 x 400 V PE 50 Hz
- controls voltage: 24 V DC

PNEUMATIC SYSTEM

- pressure: 6 bar

APPLIES TO

- all tray erecting machines with flat hopper

SoleBoxENG_f-01.indd

→ PERFORMANCES DEPEND ON PRODUCT'S SIZES, PRODUCT'S QUALITY AND OPERATING CONDITIONS



Via Carducci, 18 — 24066 Pedrengo — Bergamo • Italy
 Tel. +39 035 654111 • Fax +39 035 654112
 e-mail: info@solema-boards.com • web: www.solema-boards.com

FOR NORTH AMERICA

Solema USA inc

315 Glenn Street - P.O. Box 472
 Crawfordsville - IN - 47933
 USA

info@solemausa.com
 tel. 765 361 0806 / fax 765 361 0989